

Mohol



we could use his  
paintings and  
photograms

can we explore  
industrial materials  
and technology

Mohol is an experimental high-contrast sans serif typeface designed by Adam Katyi, released at Hungarumlaut type foundry. Mohol was originally designed for the Laszlo Moholy-Nagy Design Grant.

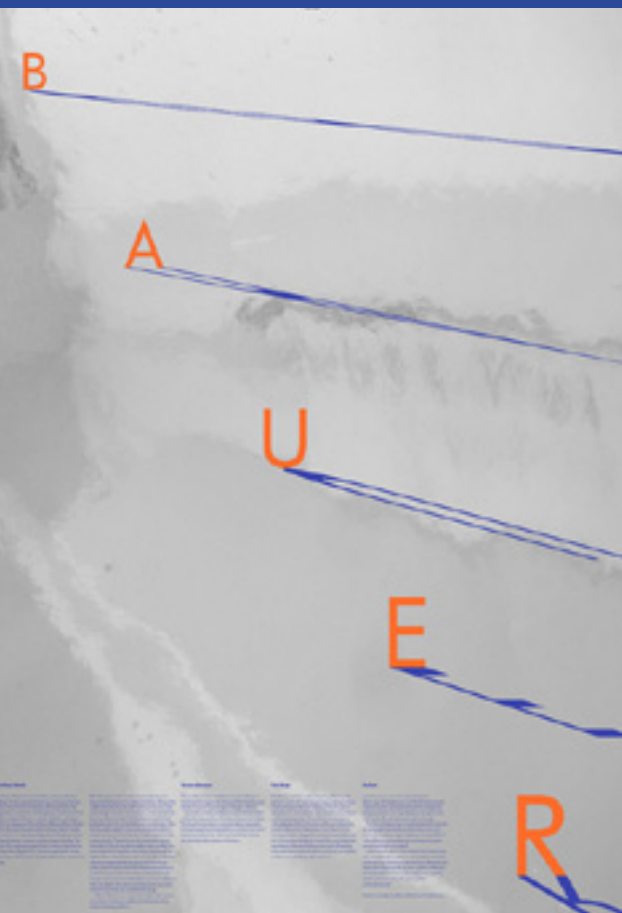
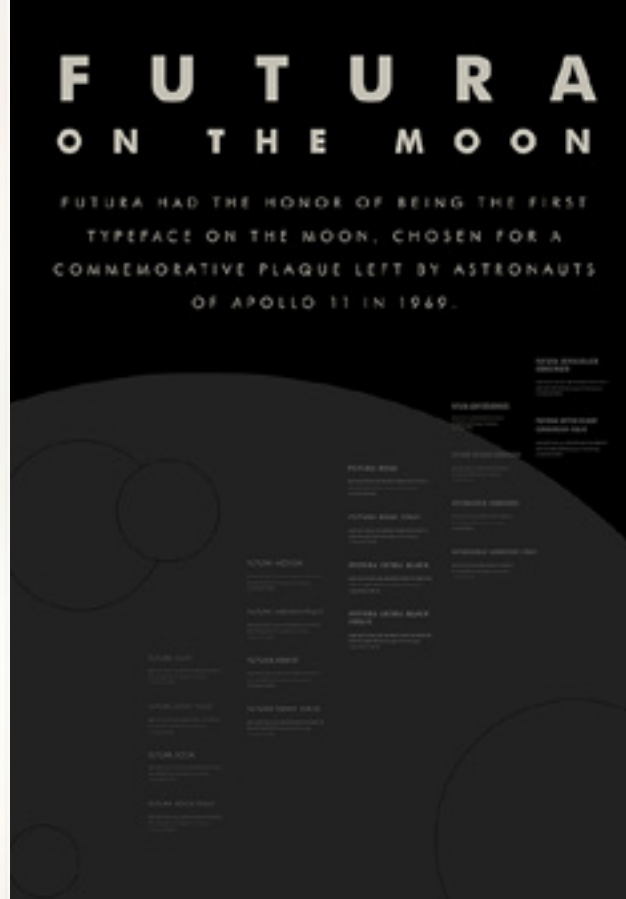
The brief was to design a new typeface, in respect of Laszlo Moholy-Nagys work and heritage. Moholy-Nagy was influenced by constructivism and a strong advocate of the integration of technology and industry into the arts.

I started to experiment with my brushes and Pilot Parallel Pens. I wanted to draw sans-serif letters with similar horizontal and vertical strokes. A rounded shape is built up by two forms a neoclassical construction vertical axis and a reversed contrast shape. I drew all the characters with a flat brush and a pilot pen.

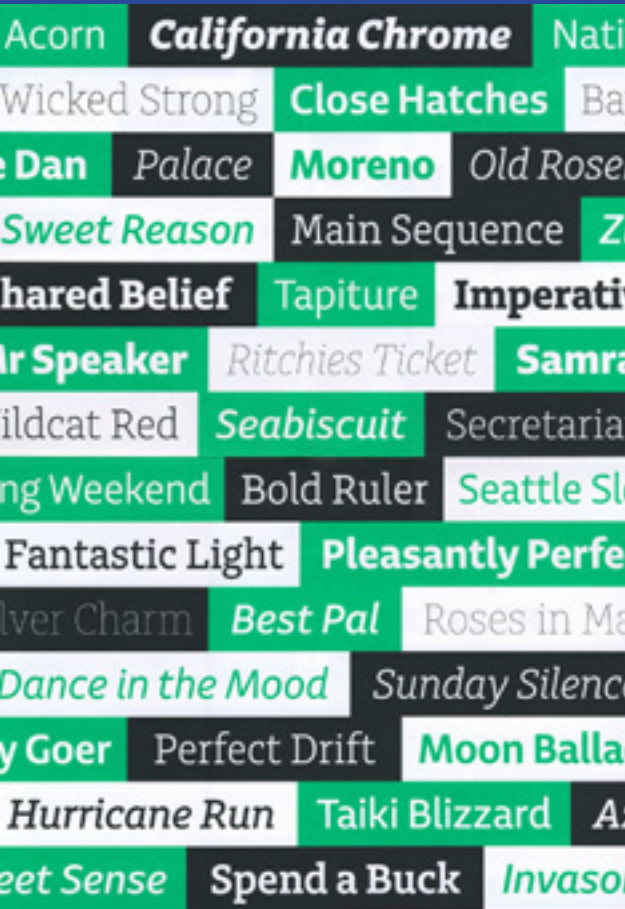
Perhaps we could  
use Pilot Parallel  
Pens

Can we make a  
colleciton of old or  
traditional tools  
creating the letter









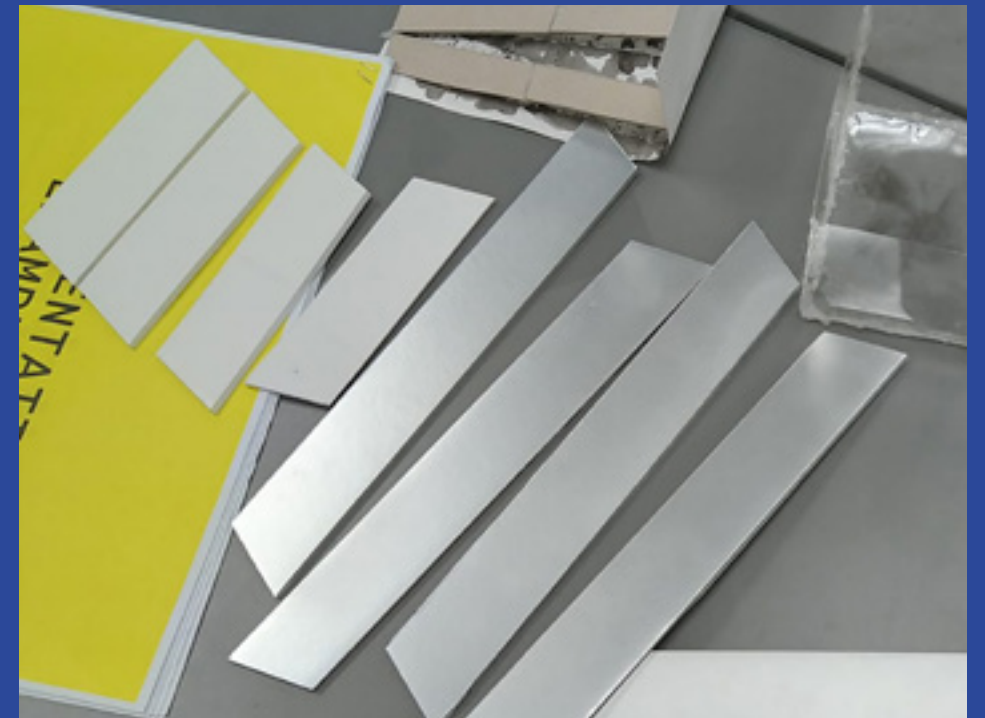
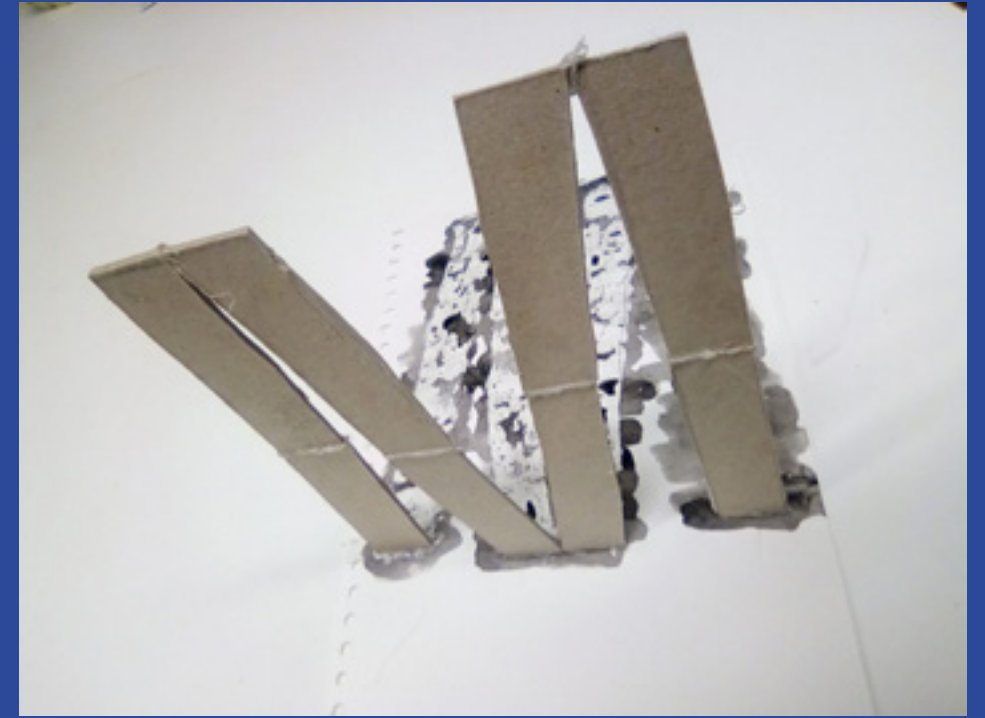
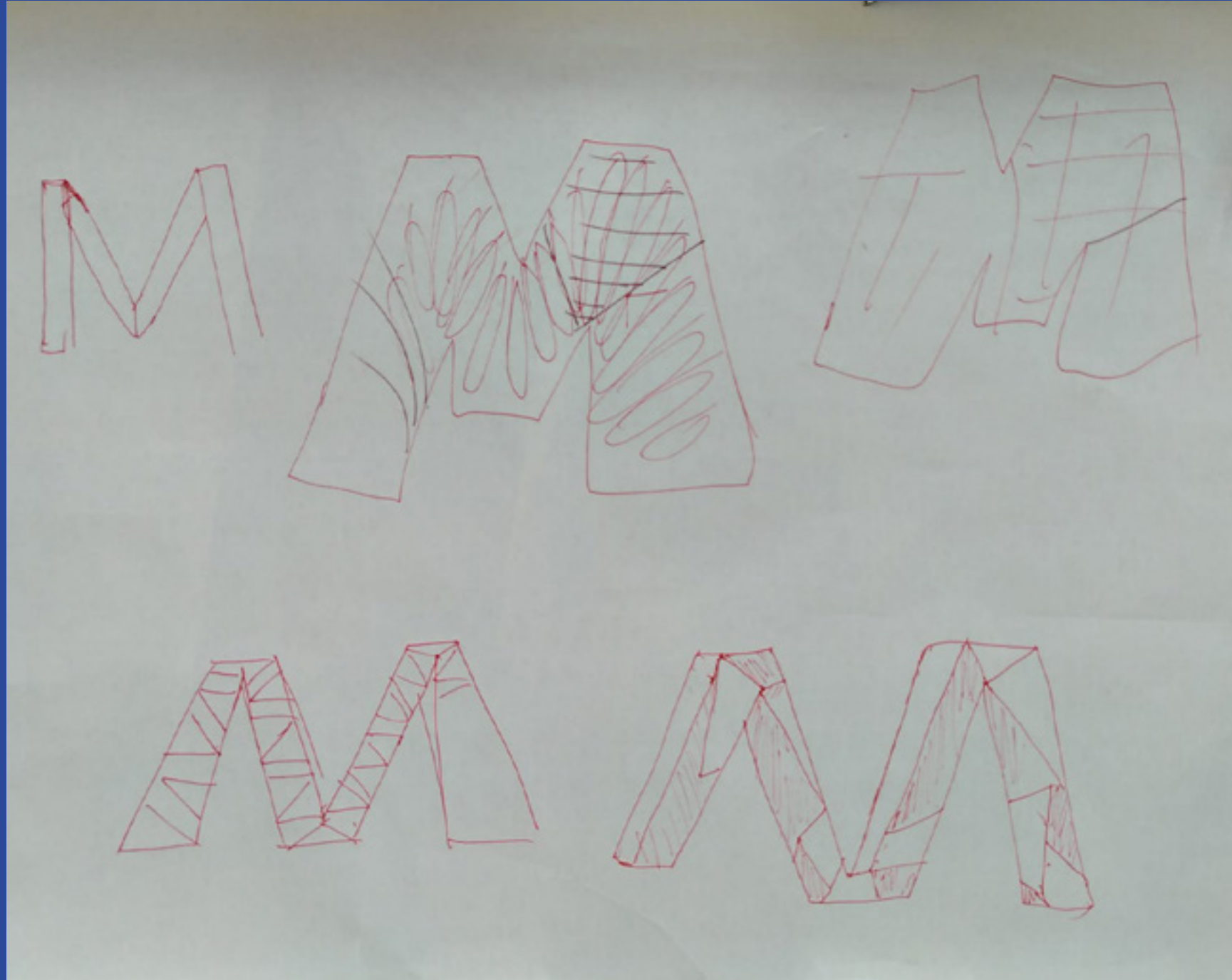


# The origins

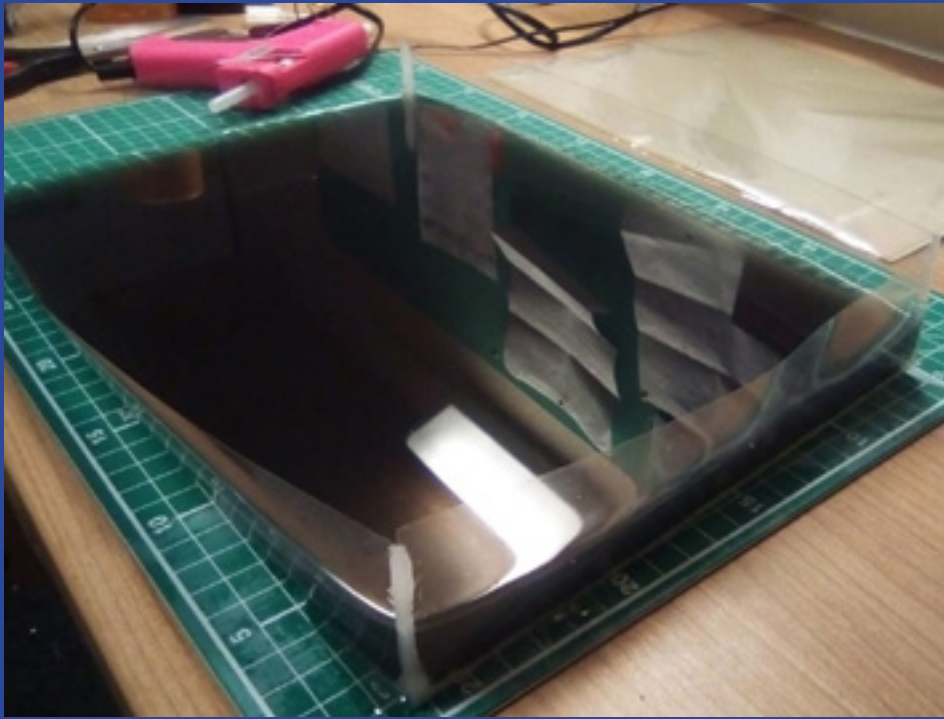




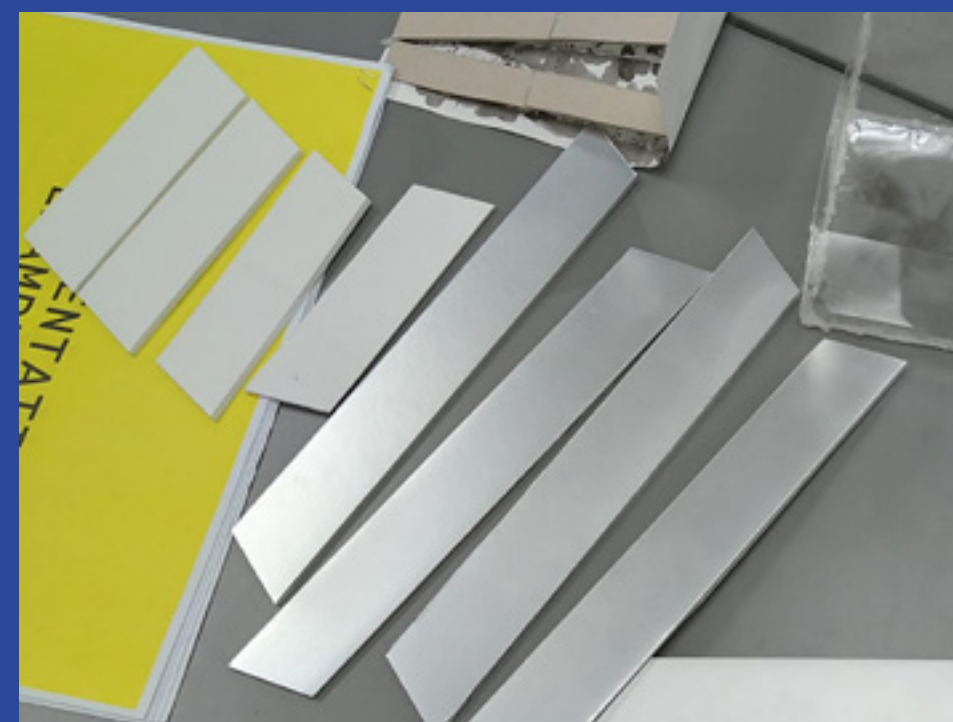
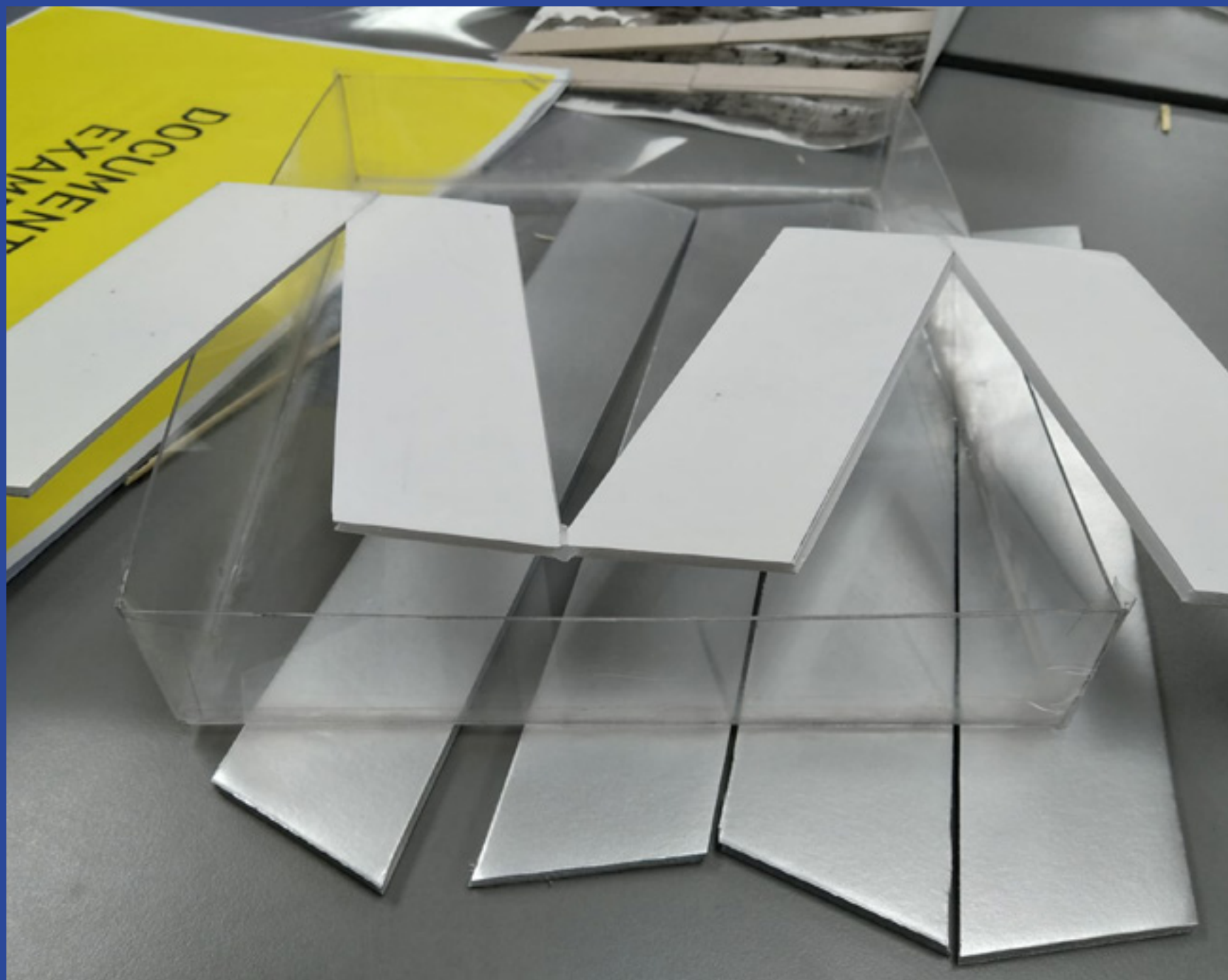






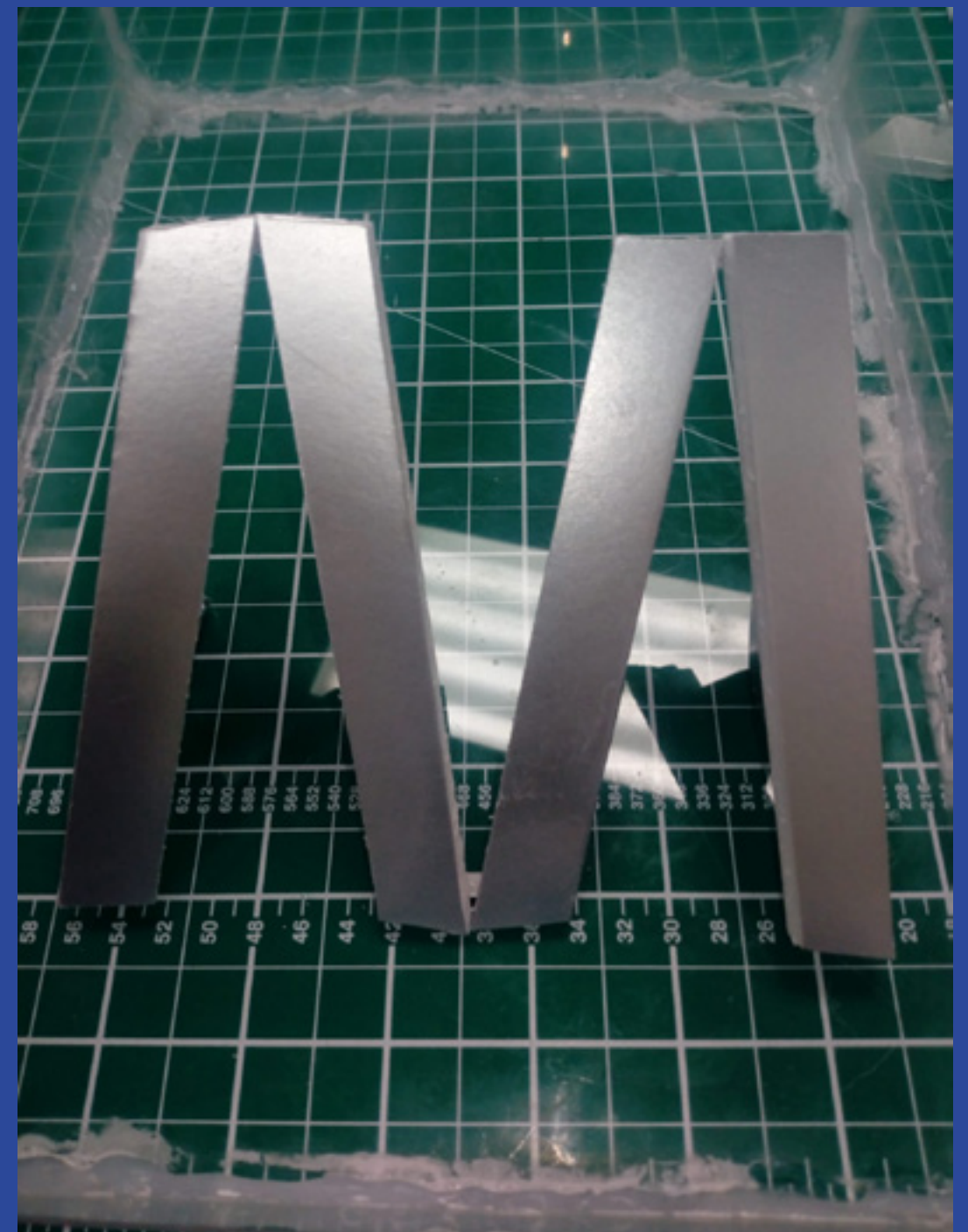








# what we wanted







what we got





# Heyday and Nadir







restart from scratch











New formula of ink and water

Use Wood instead of Foam

Use grey ink instead of acrylic grey spray

New bigger Bath



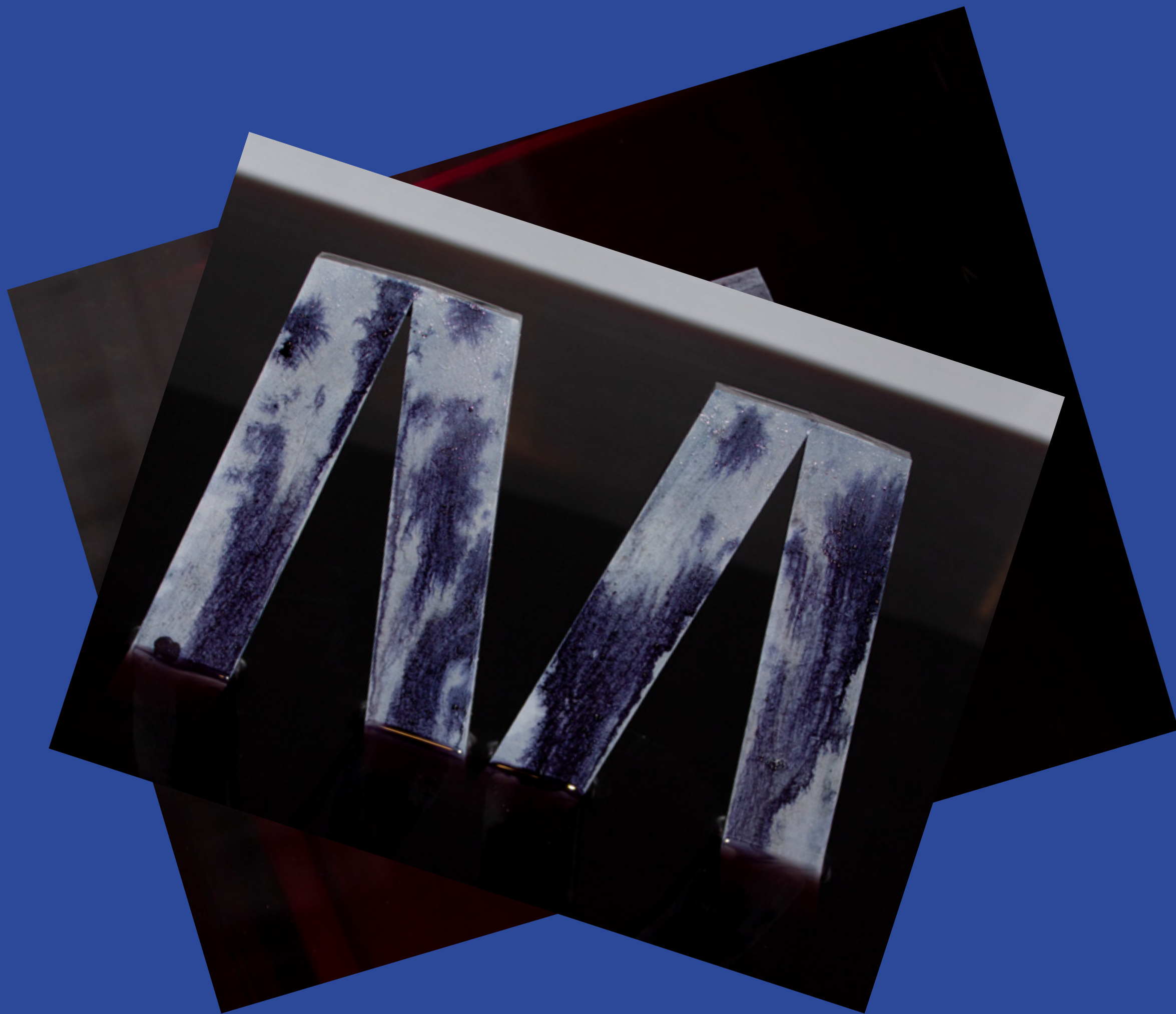


new object  
new camera  
new set

new  
photoshoot























we were not happy.





Trial and  
error until  
success

new  
photoshoot























the  
aftermath

















Named after Hungarian Bauhaus painter and photographer László Moholy-Nagy, Kufyl developed a high-contrast sans serif from experiments with brushes and Pilot Parallel Pens.

Mohol Thin  
Mohol Light  
Mohol Regular  
Mohol Bold  
Mohol Black  
Mohol Ultra

Aa Bb Cc Dd  
Ee Ff Gg Hh  
Ii Jj Kk Ll Mm  
Nn Oo Pp Qq  
Rr Ss Tt Uu Vv  
Ww Xx Yy Zz

Named after Hungarian Bauhaus painter and photographer László Moholy-Nagy, Kufyl developed a high-contrast sans serif from experiments with brushes and Pilot Parallel Pens.

Mohol Thin  
Mohol Light  
Mohol Regular  
Mohol Bold  
Mohol Black  
Mohol Ultra

Aa Bb Cc Dd  
Ee Ff Gg Hh  
Ii Jj Kk Ll Mm  
Nn Oo Pp Qq  
Rr Ss Tt Uu Vv  
Ww Xx Yy Zz

Named after Hungarian Bauhaus painter and photographer László Moholy-Nagy, Kufyl developed a high-contrast sans serif from experiments with brushes and Pilot Parallel Pens.

Mohol Thin  
Mohol Light  
Mohol Regular  
Mohol Bold  
Mohol Black  
Mohol Ultra

Aa Bb Cc Dd  
Ee Ff Gg Hh  
Ii Jj Kk Ll Mm  
Nn Oo Pp Qq  
Rr Ss Tt Uu Vv  
Ww Xx Yy Zz

# Mohol



Mohol from Hungerbund Type Foundry.  
Named after Hungarian Bauhaus painter and photographer László Moholy-Nagy, Kufyl developed a high-contrast sans serif from experiments with brushes and Pilot Parallel Pens.

Mohol Thin  
Mohol Light  
Mohol Regular  
Mohol Bold  
Mohol Black  
Mohol Ultra

Aa Bb Cc Dd  
Ee Ff Gg Hh  
Ii Jj Kk Ll Mm  
Nn Oo Pp Qq  
Rr Ss Tt Uu Vv  
Ww Xx Yy Zz

# Mohol



Mohol from Hungerbund Type Foundry.  
Named after Hungarian Bauhaus painter and photographer László Moholy-Nagy, Kufyl developed a high-contrast sans serif from experiments with brushes and Pilot Parallel Pens.

Mohol Thin  
Mohol Light  
Mohol Regular  
Mohol Bold  
Mohol Black  
Mohol Ultra

Aa Bb Cc Dd  
Ee Ff Gg Hh  
Ii Jj Kk Ll Mm  
Nn Oo Pp Qq  
Rr Ss Tt Uu Vv  
Ww Xx Yy Zz

# Mohol

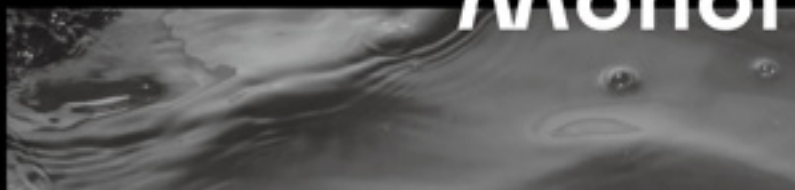


Mohol from Hungerbund Type Foundry.  
Named after Hungarian Bauhaus painter and photographer László Moholy-Nagy, Kufyl developed a high-contrast sans serif from experiments with brushes and Pilot Parallel Pens.

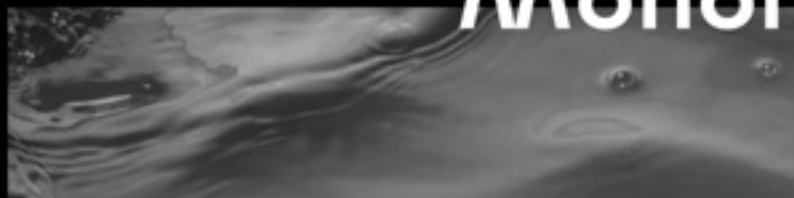
Mohol Thin  
Mohol Light  
Mohol Regular  
Mohol Bold  
Mohol Black  
Mohol Ultra

Aa Bb Cc Dd  
Ee Ff Gg Hh  
Ii Jj Kk Ll Mm  
Nn Oo Pp Qq  
Rr Ss Tt Uu Vv  
Ww Xx Yy Zz

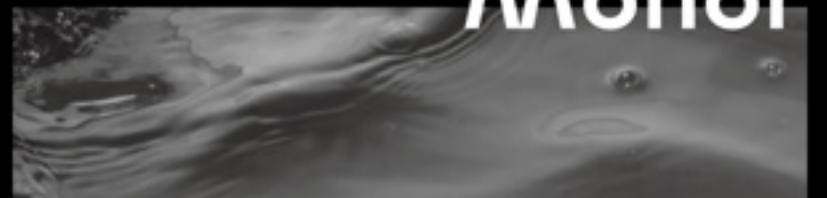
# Mohol



# Mohol



# Mohol







Made by  
Daxter  
Sounak  
First  
Daniela  
Raina